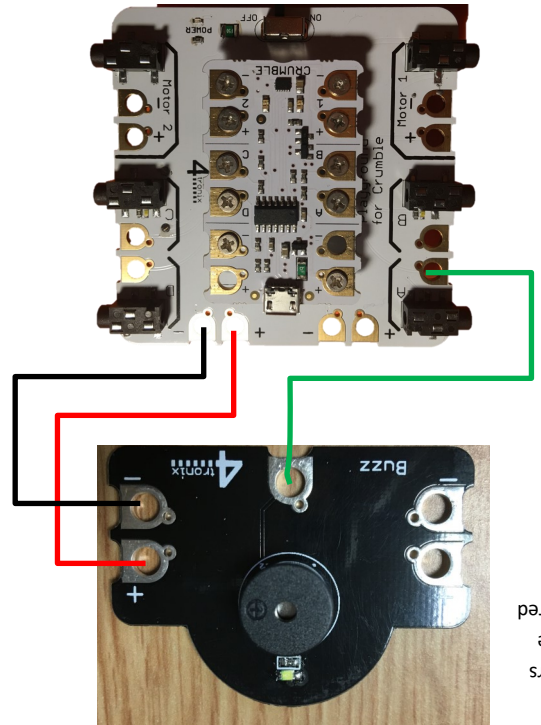


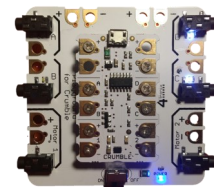
This buzzer is controlled by A, B, C or D



Buzzers can be powered from either side

Wiring

Crumble Playground Maker Cards Buzzer



Useful Code Blocks

program start

If the buzzer was plugged into A

set A HI → This would turn in on

set A LO → This would turn it off

do 10 times

loop

Crumble must be powered for the buzzer to work when unconnected to the PC

do forever

loop

wait 1 seconds

Hints

The buzzer can be powered from either side.
 These can be purchased from 4Tronix

This work is licensed under the Creative Commons Attribution-NonCommercial 3.0 Unported License. To view a copy of this license, visit <http://creativecommons.org/licenses/by-nc/3.0/> or send a letter to Creative Commons, 444 Castro Street, Suite 900, Mountain View, California, 94041, USA.