

Useful Code Blocks

HI means the button is pressed LO means de-pressed



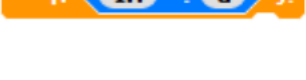
Wait until the button attached to B is pressed down



If the button attached to B is pressed down (HI) then do something



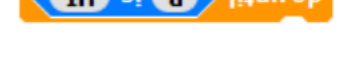
If the button attached to B is pressed down (HI) then do something



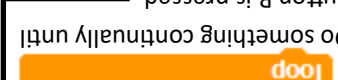
Else it is not pressed down do something else



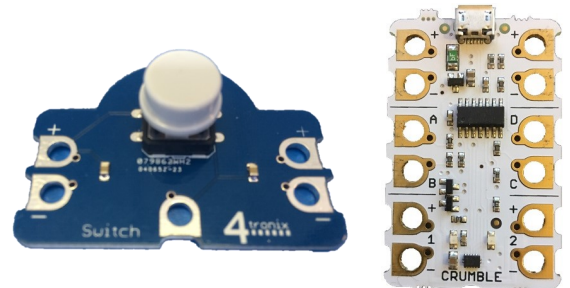
Do something continually until B is pressed



If you wish any of these programs to wrap them in a forever loop

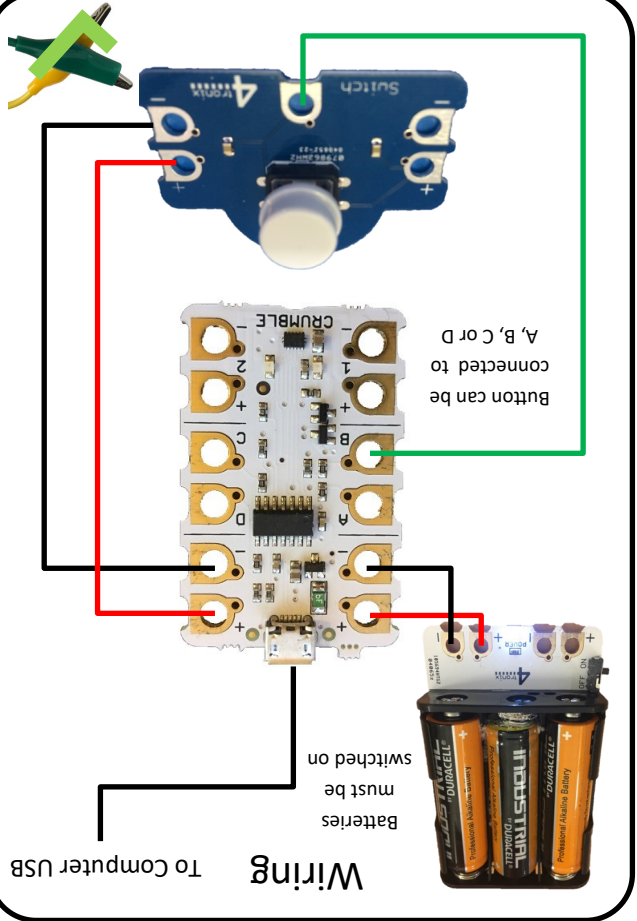


Crumble Push Button



MC51

Wiring To Computer USB



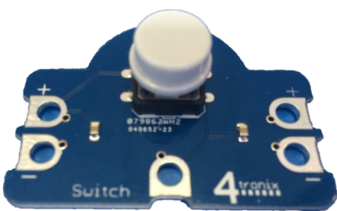
More Information

Buttons are INPUT devices

Remember you can make things happen when the button is pressed and when the button is de-pressed.

There are other types of switches that don't have to be held down to stay (HI) on.

The colour of the insulation on the wires is to help you easily spot errors. Many electrical diagrams would show + as red and - as black. You can use any colour that is available to you, it will make no difference to the program.



Electricity can be passed on to other devices through the extra + and - power connections on this device

