

Useful Code Blocks

B is HI **B is LO**

HI means the button is pressed LO means de-pressed

Wait until B is HI

Wait until the button attached to B is pressed down

if B is HI then

if the button attached to B is pressed down (HI) then do something

end if

if the button attached to B is pressed down (HI)

if B is HI then

B is pressed down (HI) then do something

else

Else it is not pressed

end if

down do something else

do until B is HI

if you wish any of these programs to check over and over don't forget to wrap them in a forever loop

Do something continually until button B is pressed

More Information

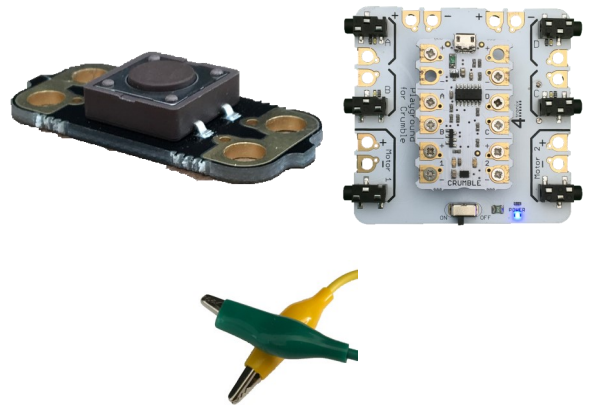
Remember you can make things happen when the button is pressed and when the button is de-pressed.

There are other types of switches that don't have to be held down to stay (HI) on.

The colour of the insulation on the wires is to help you easily spot errors. Many electrical diagrams would show + as red and - as black. You can use any colour that is available to you. It will make no difference to the program.



Crumble Playground Push Button

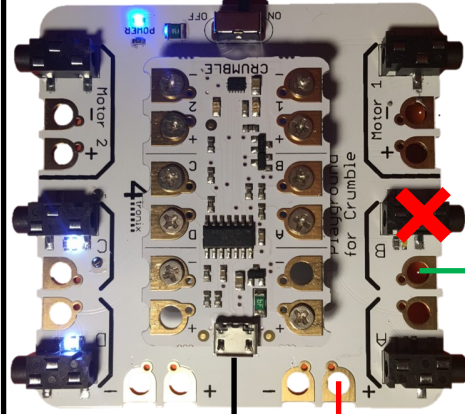


MC18



Wiring

To Computer USB



Batteries must be switched on

A button can be connected to A, B, C or D

