

Useful Code Blocks

B is HI B is LO

HI means the button is pressed LO means de-pressed

Wait until the button attached to B is pressed down

wait until B is HI

if the button attached to B is pressed down (HI) then do something

end if

if the button attached to B is pressed down (HI)

if B is HI then

then do something

else it is not pressed

end if

down do something else

if you wish any of these programs to check over and over don't forget to wrap them in a forever loop

do until B is HI

loop

Do something continually until button B is pressed

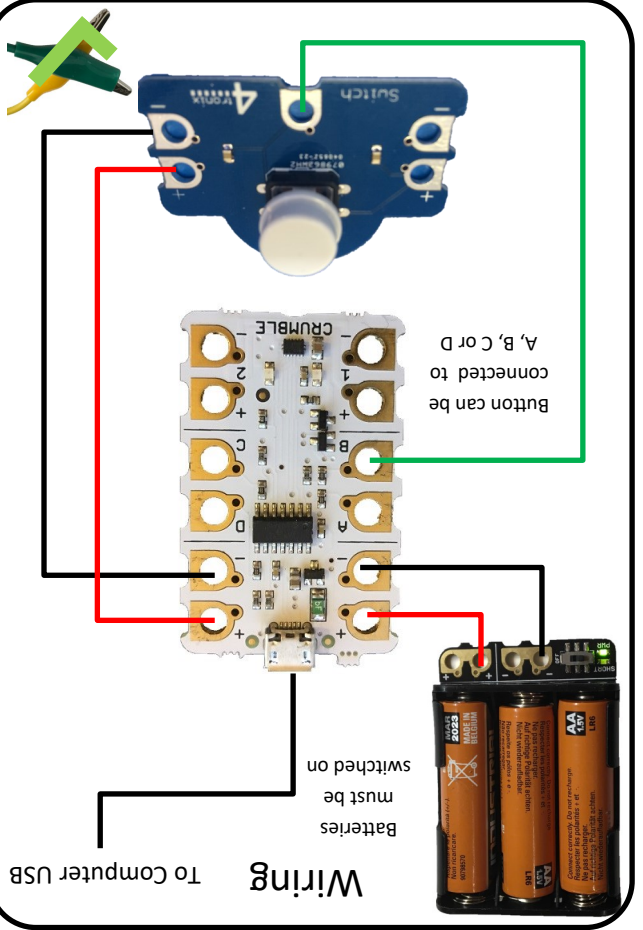
Wiring

To Computer USB

Batteries must be switched on



Button can be connected to A, B, C or D



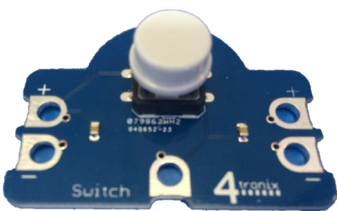
More Information

Buttons are INPUT devices

Remember you can make things happen when the button is pressed and when the button is de-pressed.

There are other types of switches that don't have to be held down to stay (HI) on.

The colour of the insulation on the wires is to help you easily spot errors. Many electrical diagrams would show + as red and - as black. You can use any colour that is available to you, it will make no difference to the program.



Electricity can be passed on to other devices through the extra + and - power connections on this device

Crumble Push Button



MC51rb